

Master Cylinders & Reservoirs

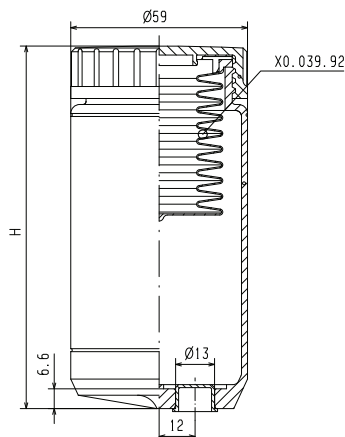


4





P/N 10.8687.10/13 STANDARD RESERVOIRS



	Nipple kit	Alluminium	R 10.8687.22
	Nipple kit	Alluminium	R 10.8687.26

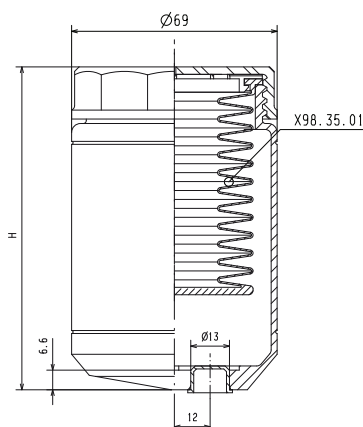
Part number	Volume[cm ³]	H
R 10.8687.10	83	75.5
R 10.8687.11	163	110.5
R 10.8687.12	180	120.5
R 10.8687.13	238	148.5

	Nipple		Nut		Washer		O-ring

4



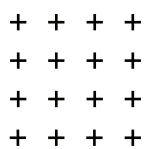
P/N 10.8687.14/15 GRAN TOURING RESERVOIRS



	Nipple kit	Alluminium	R 10.8687.22
	Nipple kit	Alluminium	R 10.8687.26

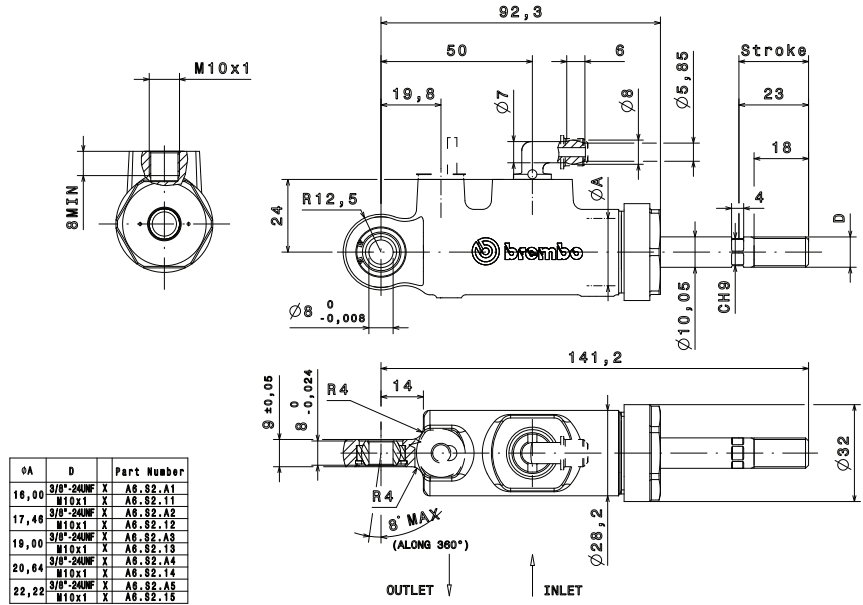
Part number	Volume[cm ³]	H
R 10.8687.14	199	108.4
R 10.8687.15	304	144.5

	Nipple		Nut		Washer		O-ring



++ ++
 ++ ++
 ++ ++
 ++ ++

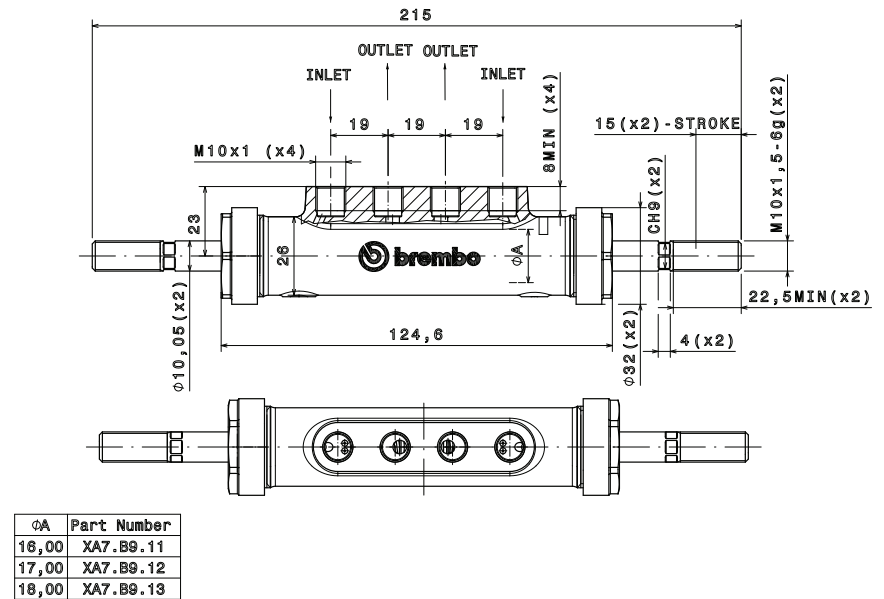
XA6.S2.11/15 - XA6.S2.A1/A5 FORGED MASTER CYLINDER



4

++ ++
 ++ ++
 ++ ++
 ++ ++

P/N XA7.B9.11/13 TWIN MASTER CYLINDER FOR HANDBRAKE

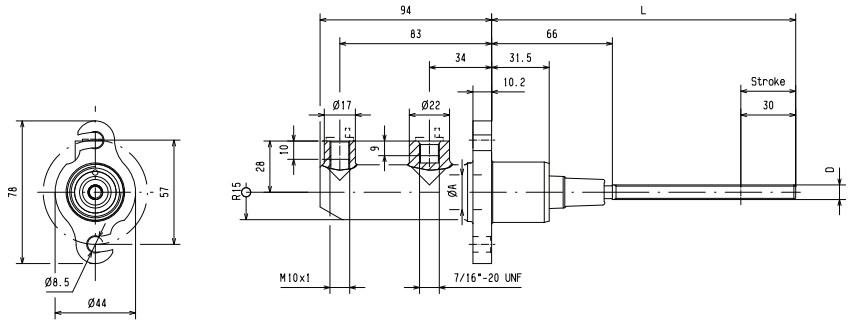


++ ++
 ++ ++
 ++ ++
 ++ ++

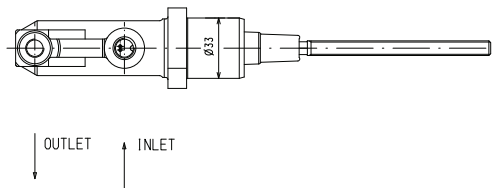
P/N 10.9243.54/96

TWO BOLT FIXING MASTER CYLINDER

+++
+++
+++
+++



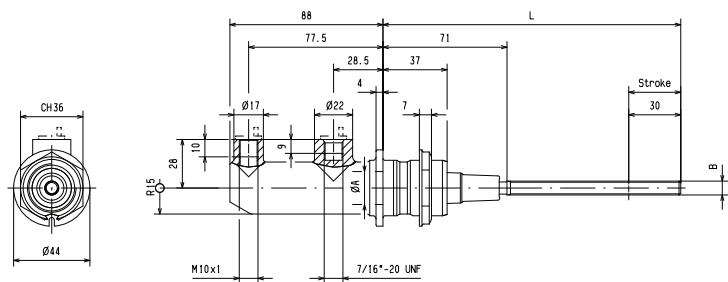
ØA	D	L	PUSHED MATERIAL	PART NUMBER
17.46	M8x1.25	117	STEEL	R 10.9243.54
	5/16"-24UNF	166	STEEL	R 10.9243.55
	M8x1.25	117	TITANIUM	R 10.9243.56
19.05	M8x1.25	117	STEEL	R 10.9243.74
	5/16"-24UNF	166	STEEL	R 10.9243.75
	M8x1.25	117	TITANIUM	R 10.9243.76
	M8x1.25	117	STEEL	R 10.9243.84
20.64	5/16"-24UNF	166	STEEL	R 10.9243.85
	M8x1.25	117	TITANIUM	R 10.9243.86
	M8x1.25	117	STEEL	R 10.9243.94
22.22	5/16"-24UNF	166	STEEL	R 10.9243.95
	M8x1.25	117	TITANIUM	R 10.9243.96



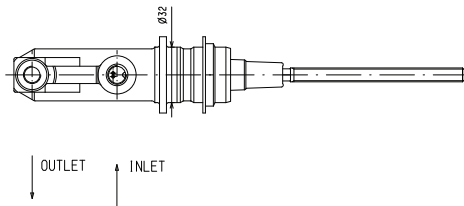
4

P/N 10.6815.56/97

SINGLE NUT FIXING MASTER CYLINDER



ØA	B	L	Part Number
17.46	5/16" 24UNF	171	R 10.6815.57
17.46	M10x1	122	R 10.6815.56
19.05	5/16" 24UNF	171	R 10.6815.77
19.05	M10x1	122	R 10.6815.76
20.64	5/16" 24UNF	171	R 10.6815.87
20.64	M10x1	122	R 10.6815.86
22.22	5/16" 24UNF	171	R 10.6815.97
22.22	M10x1	122	R 10.6815.96



+++
+++
+++
+++